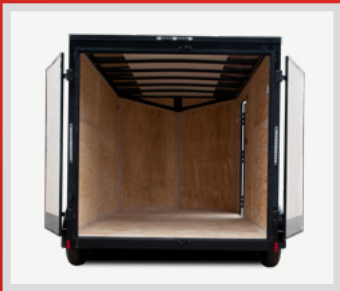




CARGO

E-SERIES

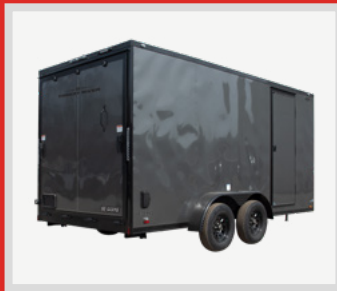


4' - 5' WIDE

Need something easy to tow with a smaller vehicle?

The E-Series offers lightweight and versatile options in both 4' & 5' wide models

6' - 14' **2100 - 1350**
BOX LENGTHS **LBS PAYLOAD ***



6' WIDE

Looking for extra space while still maintaining easy visibility around your trailer?

Our 6' wide E-Series models are the perfect balance of capacity and convenience.

8' - 16' **1690 - 5400**
BOX LENGTHS **LBS PAYLOAD ***



7 - 7.5' WIDE

Built to handle a wide range of hauling needs, our 7' and 7.5' wide E-Series trailers are ready for the job. From small equipment to lawn mowers to UTVs, this series has you covered.

10' - 24' **1900 - 5150**
BOX LENGTHS **LBS PAYLOAD ***

*Payload based off of base model builds



FOREST RIVER

FORESTRIVERINC.COM

	EHW46SA	EHW48SA	EHW58SA	EHW510SA	EHW610SA	EHW612SA	EHW612TA2	EHW712SA	EHW712TA2	EHW714TA2	EHW716TA2
GVWR	2000	2000	2990	2990	2990	2990	7000	3500	7000	7000	7000
Payload Capacity	1420	1350	2100	1890	1790	1690	5400	1900	5450	5050	4900
Exterior Length	9'6"	11'6"	11'10"	13'10"	13'10"	15'10"	15'10"	15'10"	15'10"	17'10"	19'10"
Exterior Width	5'11"	5'11"	6'10"	6'10"	7'10"	7'10"	7'10"	8'6"	8'6"	8'6"	8'6"
Exterior Height	5'6"	5'6"	6'6"	6'6"	7'6"	7'6"	8'1"	8'0"	8'0"	8'0"	8'0"
Interior Length	7'1"	9'1"	9'2"	11'2"	11'2"	13'2"	13'2"	13'1"	13'1"	15'1"	17'1"
Interior Width	3'8"	3'8"	4'8"	4'8"	5'8"	5'8"	5'8"	6'8"	6'8"	6'8"	6'8"
Interior Height	3'11"	3'11"	5'0"	5'0"	6'0"	6'0"	6'0"	6'0"	6'0"	6'0"	6'0"
Rear Door Type	Single	Single	Single	Single	Ramp	Ramp	Ramp	Ramp	Ramp	Ramp	Ramp
Rear Door Width	3'6"	3'6"	4'5"	4'5"	5'4"	5'4"	5'4"	6'5"	6'5"	6'5"	6'5"
Rear Door Height	3'7"	3'7"	4'9"	4'9"	5'8"	5'8"	5'8"	5'9"	5'9"	5'9"	5'9"
Coupler Size	2"	2"	2"	2"	2"	2"	2-5/16"	2-5/16"	2-5/16"	2-5/16"	2-5/16"
Curb Weight	580	650	890	1100	1200	1300	1600	1600	1850	1950	2100
Hitch Weight	58	65	90	110	120	140	160	160	185	200	215
Hitch Height	15"	15"	15"	15"	16"	16"	17"	18"	18"	18"	18"
Platform Height	17"	17"	17"	17"	17"	17"	18"	19"	19"	19"	19"
Axle	1-2,000	1-2,000	1-2,990	1-2,990	1-2,990	1-2,990	2-3,500	1-3,500	2-3,500	2-3,500	2-3,500
Suspension	Spring	Spring	Spring	Spring	Spring	Spring	Spring	Spring	Spring	Spring	Spring
Brakes	Optional	Optional	Optional	Optional	Optional	Optional	Optional	Electric	Electric	Electric	Electric
Tires	ST175/80R13	ST175/80R13	ST205/75R15	ST205/75R15	ST205/75R15	ST205/75R15	ST205/75R15	ST205/75R15	ST205/75R15	ST205/75R15	ST205/75R15
Wheels	5 Bolt	5 Bolt	5 Bolt	5 Bolt	5 Bolt	5 Bolt	5 Bolt	5 Bolt	5 Bolt	5 Bolt	5 Bolt
Main Frame	3" Tube	3" Tube	3" Tube	3" Tube	3" Tube	3" Tube	4" Tube	4" Tube	4" Tube	4" Tube	4" Tube
Floors	3/4"	3/4"	3/4"	3/4"	3/4"	3/4"	3/4"	3/4"	3/4"	3/4"	3/4"
Walls	3/8"	3/8"	3/8"	3/8"	3/8"	3/8"	3/8"	3/8"	3/8"	3/8"	3/8"



CARGO

1280 Commerce Dr / Bristol, IN 46507 / (574) 848-1335


cargomatetrailer.com

Cargo Mate's "E-Series" enclosed trailer line up offers a variety of sizes, options, and packages to meet your hauling needs. These enclosed models range in widths from 4', 5', 6', 7' and 7.5' wide with lengths ranging from 6' all the way to 24'. The "E-Series" is loaded with a multitude of standard features that most companies will have you pay extra for, but we do them as a necessary item to enhance the overall build.



VISIT OUR WEBSITE
FOR FULL FEATURES
AND SPECIFICATIONS

STANDARDS

- 4', 5', 6' Wide Models Standard With 18" V-Nose (Sloped)
- 7', 7.5', 8.5' Wide Models Standard With 24" V-Nose (Sloped)
- 32" C/S Door on 6', 7', 7.5' Wide Models
- 36"C/S Door on 8.5' Wide Models
- Semi-Style Camlock Door Latch
- Door Hold-Back on Rear Door
- Leaf-Spring Axle
- E-Z Lube Hubs
- Silver Powder Coated Wheels
- Radial Tires
- Aluminum Top Rails
- 24" ATP Stoneguard
- (1) 12V LED Dome Light
- (2) Flow Thru Sidewall Vents Standard On All Models
- Aluminum Exterior Fenders
- Clear Lens LED Clearance Lights
- Clear Lens LED Strip Tail Lights
- Clear Lens LED Strip Tail Lights
- DOT Lighting
- License Plate Holder With Light
- .030 Aluminum Exterior
- Rear Ramp Door With Flap Standard
- 16" OC Walls, Floor, Roof
- Black DTM Alkyd Enamel Coating
- Tongue Jack With Sand Pad
- Welded Safety Chains
- Full-Color Decals

PACKAGES

**AMER GUARD
PROTECTION**

**5' & 6' WIDE
VALUE**

7' WIDE VALUE

CARGO PLUS

BLACKOUT

CONTRACTOR

ROUND TOP

30 AMP ELECTRICAL

50 AMP ELECTRICAL



LEARN MORE:

Scan this QR code with your mobile device to learn more about Forest River.



YOUR **CARGO MATE** DEALER

© 2025 Cargo Mate Trailers, a Division of Forest River, Inc., a Berkshire Hathaway company. All Rights Reserved.